

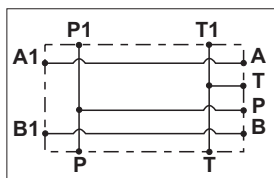
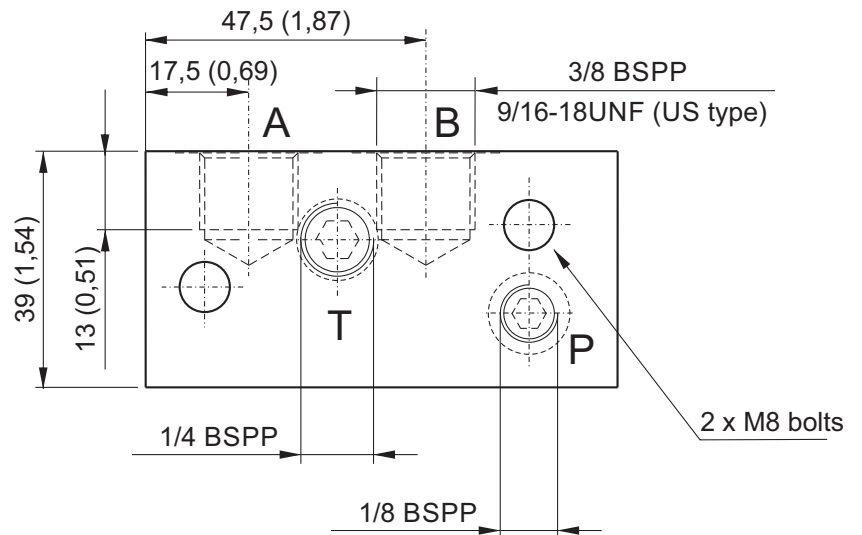
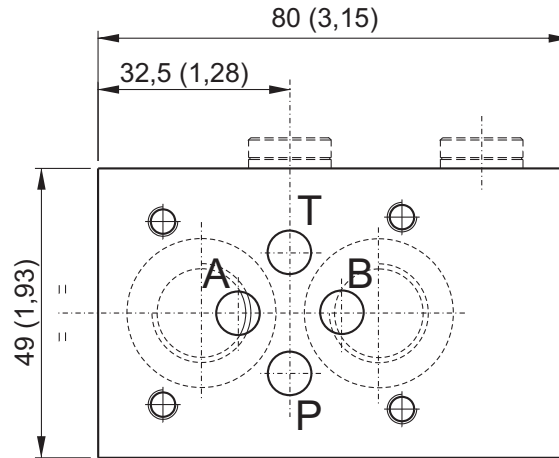
**MODULAR MANIFOLDS NG6 (CETOP 3), REAR PORTS**



Dimensions in mm (inches)

**Main features**

<b>Max pressure</b>	350 bar
<b>Weight</b>	0,37 Kg (0,82lb)
<b>Fixing bolts</b>	2 M8 tie - rods steel class 8.8 or above



<i>Parallel connection</i>	Spare part code
<b>Rear ports</b>	<b>E60403001</b>
<b>Rear ports US execution</b>	<b>E60403001US</b>

**Option 1/4" BSP P port:**

**Spare part code**

**PORTMF0001**

Note: Recommended tightening torque for M8 bolts: 16 Nm. Attention! Do not use tie-rods less than 8.8.

\*: US execution with 9/16-18UNF SAE06 exit ports

To add external manifolds to a PPC assembly code, just add their spare part codes at the end of the PPC code. eg: PPC-0,8 12DC-MB-J-K0,6-V200-G-RETURN KIT-1,5L+E60403004+E60403001.

The Cetop attachment is on motor side. With AC motor frames bigger than 71 and DC motors bigger than dia. 125mm, always add a spacer manifold (see E60403004 code in F section) below the Cetop manifold to avoid interference between the valve and the motor. Code does not include the Cetop solenoid valve. See NG6 (Cetop 3) valves table in section G.