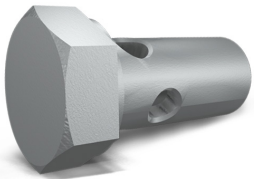
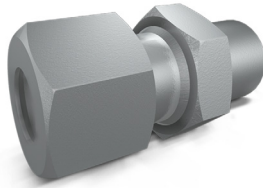


## RACCORDI VARI PER MONTAGGIO

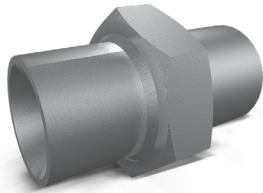
TIPO / TYPE  
**VF**



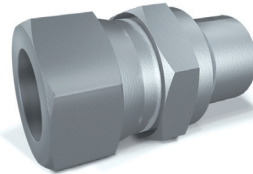
TIPO / TYPE  
**NDO**



TIPO / TYPE  
**ND**



TIPO / TYPE  
**NDG**



## DIFFERENT FITTINGS

**IMPIEGO:**

Raccordi per il montaggio delle valvole.

**MATERIALI E CARATTERISTICHE:**

Materiale: acciaio zincato

**USE AND OPERATION:**

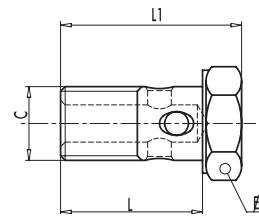
Fittings for valve mounting.

**MATERIALS AND FEATURES:**

Material: zinc-plated steel

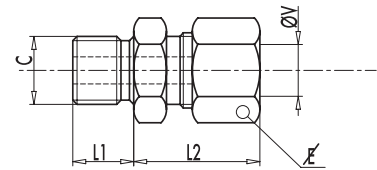
### VITE FORATA - HOLED SCREW

CODICE CODE	SIGLA TYPE	COPPIA DI SERRAGGIO CLOSING COUPLE		L mm	L1 mm	E mm	PESO WEIGHT Kg.
		Nm	C GAS-MET				
<b>R1350</b>	VF 1/4"	55	G 1/4"	28	34	19	0,04
<b>R1360</b>	VF 3/8"	70	G 3/8"	31	39	22	0,05
<b>R1370</b>	VF 1/2"	85	G 1/2"	38	46	27	0,08
<b>R1390</b>	VF 14	60	M14X1,5	27	33,5	19	0,03
<b>R1380</b>	VF 18	75	M18X1,5	36	44	24	0,06



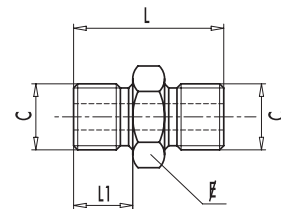
### NIPLO CON DADO E OGIVA - NIPPLE WITH NUT AND OLIVE

CODICE CODE	SIGLA TYPE	C GAS	ØV mm	L1 mm	L2 mm	E mm	PESO WEIGHT Kg.
<b>R1110</b>	NDO 3/8"X12L	G3/8"	12	13	28	22	0,06
<b>R1130</b>	NDO 1/2"X12L	G1/2"	12	13	32	22	0,10
<b>R1140</b>	NDO 1/2"X15L	G1/2"	15	13	34	27	0,12



### NIPLO DOPPIO - DOUBLE NIPPLE

CODICE CODE	SIGLA TYPE	C GAS	L mm	L1 mm	E mm	PESO WEIGHT Kg.
<b>R1115</b>	ND 3/8"X 3/8	G3/8"	33	13	22	0,05
<b>R1135</b>	ND 1/2"X 1/2	G1/2"	38	15	27	0,07



### NIPLO CON DADO A GIRELLO - NIPPLE WITH ROTARY NUT

CODICE CODE	SIGLA TYPE	C-V GAS	L1 mm	L2 mm	E mm	PESO WEIGHT Kg.
<b>R1144</b>	NDG 1/2"	G 1/2"	14	37	27	0,07
<b>R1146</b>	NDG 3/4"	G 3/4"	16	52	32	0,11

