



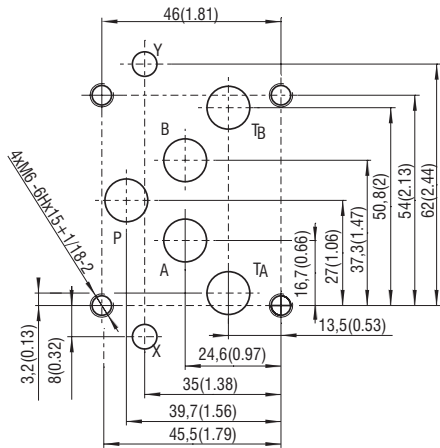
**Technical Features**

- › Pilot to Open Operated Check Valve, Poppet Type with subplate mounting surface acc. to ISO 4401, DIN 24340 (CETOP 05) standards
- › Sandwich plate design for use in vertical stacking assemblies
- › Sharp-edged ground steel seats for dirt-tolerant performance
- › Leak-free closing and suitable for fast cycling with long life
- › High flow capacity
- › Optional bias spring ranges for back-pressure control
- › In the standard version, the valve housing is phosphated and steel parts zinc coated for 240 h protection acc. to ISO 9227

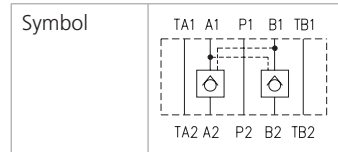
**Functional Description**

The valve allows flow to pass from port A(B)1 to A(B)2 while normally closing flow from A(B)2 to A(B)1 with load. When pressure is applied at pilot port. The flow passes from port 2 to 1. The valve has a 6:1 pilot ratio. The check valve is also spring closed to secure holding position in static conditions without the load. The valve is offered with optional bias spring ranges for back-pressure control.

ISO 4401-05-04-0-05



Ports P, A, B, T - max $\varnothing$ 11,2 mm (0.44 in)

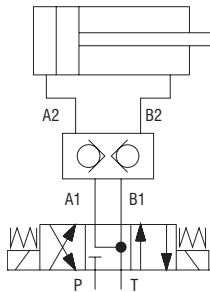


**Technical Data**

Valve size		10 (D 05)
Max. flow	l/min (GPM)	140 (37)
Max. operating pressure	bar (PSI)	350 (5080)
Cracking pressure	bar (PSI)	2 (29)
Fluid temperature range (NBR)	°C (°F)	-30 .... +100 (-22 ... +212)
Fluid temperature range (FPM)	°C (°F)	-20 .... +120 (-4 ... +248)
Area ratio (pilot piston / seat)		6:1
Weight	kg (lbs)	2.2 (4.85)

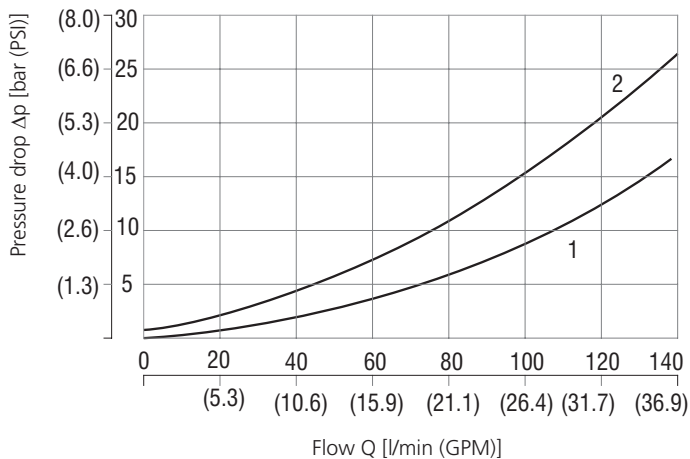
	Data Sheet	Type
General information	GI_0060	products and operating conditions
Mounting surface	SMT_0019	Size 10
Spare parts	SP_8010	

**Typical circuit with pilot operated check valve**



**Characteristics** measured at  $v = 32 \text{ mm}^2/\text{s}$  (156 SUS)

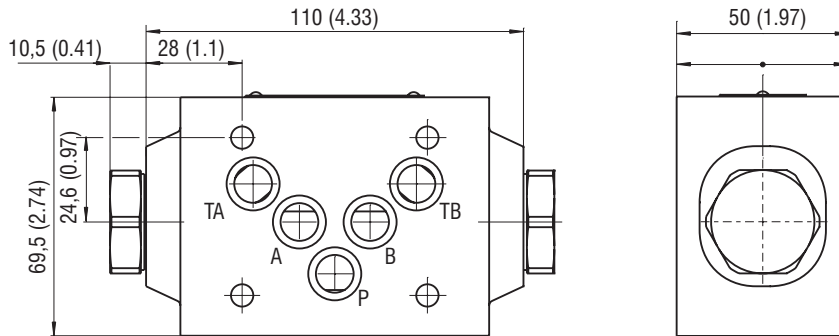
**Pressure drop related to flow rate**



	Flow direction
1	A1→A2 (B1→B2)
2	A2→A1 (B2→B1)

**Dimensions** in millimeters (inches)

Model "C,,

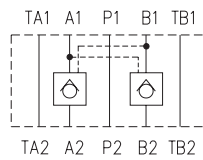
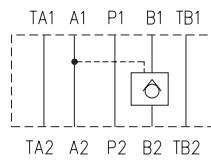
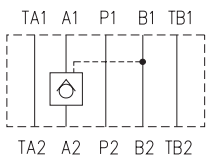


**Functional symbols**

VJR3-10/MA

VJR3-10/MB

VJR3-10/MC



- ① valve side
- ② subplate or manifold side

**Notes:** The orientation of the symbol on the name plate corresponds with the valve function.

**Ordering Code**

VJR3-10 / M   -   -

**Pilot to Open Operated Check Valve, Poppet Type, Modular**

**Valve size**

**Modular plate design**

**Functional symbols**

- Check valve in line A
- Check valve in line B
- Check valve in line A and B

**Area ratio (pilot piston / seat)**  
6:1

**Surface treatment**  
**No designation** body phosphated, steel parts  
**A** zinc-coated (ZnCr-3), ISO9227 (240 h)  
**B** zinc-coated (ZnNi), ISO 9227 (520 h)

**Seals**  
**No designation** NBR  
**V** FPM (Viton)

**Free flow cracking pressure**  
2,0 bar (29 PSI)

6

020