

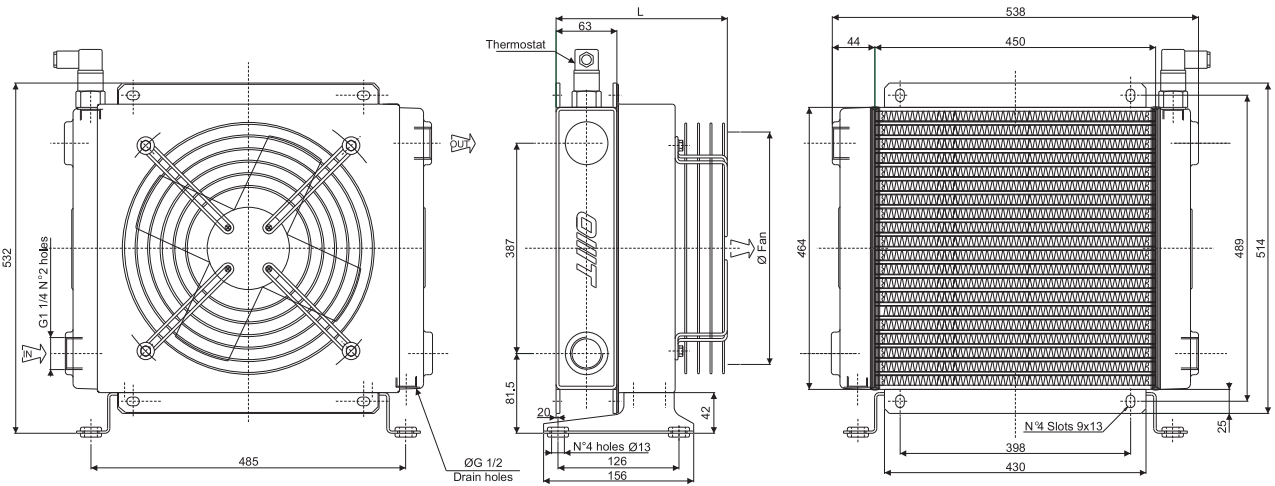
# Scambiatore tipo SS40 Serie Aria-Olio Heat exchanger series SS40 Air-Oil version



## CARATTERISTICHE TECNICHE DEL GRUPPO DI VENTILAZIONE TECHNICAL FEATURES

| Tipologia<br>Type | Frequenza<br>Frequency<br>Hz | Tensione<br>Voltage<br>V | N° Giri/min<br>RPM | Potenza<br>Power<br>kW | Diam. Ventola<br>Ø FAN<br>(mm) | dB<br>(A) | L<br>(mm) | Q air<br>(m³/h) | Cap.<br>(lt) | Peso<br>Weight<br>(kg) | IP |
|-------------------|------------------------------|--------------------------|--------------------|------------------------|--------------------------------|-----------|-----------|-----------------|--------------|------------------------|----|
| 01                | 50/60                        | 230                      | 1380/1550          | 0.18/0.25              | 400                            | 62        | 233       | 4000            | 2.6          | 21                     | 44 |
| 03                | 50/60                        | 380                      | 1380/1520          | 0.18/0.25              | 400                            | 70        | 233       | 4375            | 2.6          | 21                     | 44 |
| 14                | 50<br>60                     | 230/400<br>276/480       | 1390<br>1685       | 0.55<br>0.66           | 400                            | 71        | 438       | 4000            | 2.6          | 25                     | 55 |
| 12                | DC                           | 12                       | 2248               | 0.151                  | 385                            | 77        | 206       | 2950            | 2.6          | 20                     | 68 |
| 24                | DC                           | 24                       | 2248               | 0.151                  | 385                            | 77        | 206       | 3101            | 2.6          | 20                     | 68 |
| G2                | -                            | -                        | -                  | -                      | 400                            | -         | 235.5     | -               | 2.6          | 19                     | -  |

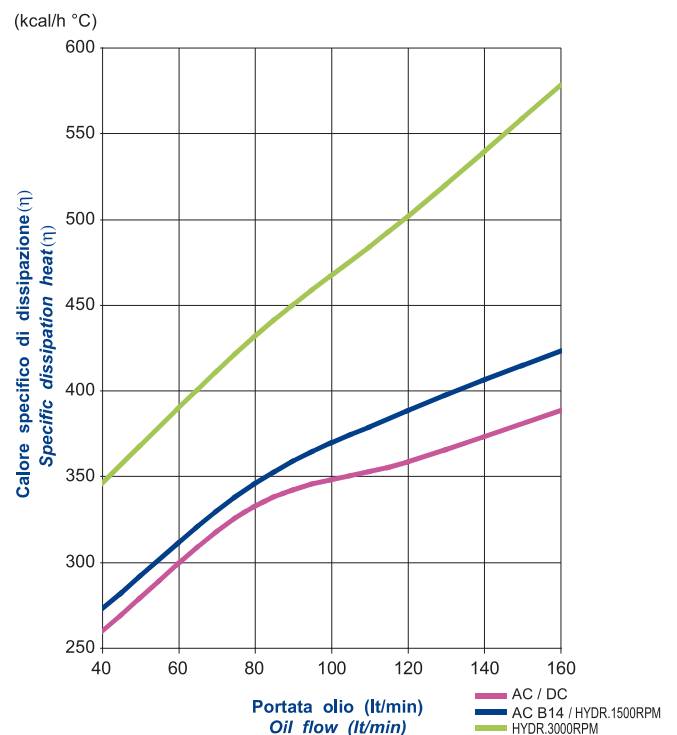
Portata olio consigliata da 40 a 160 (lt/min)  
Suggested oil flow from 40 to 160 (lt/min)



### Coefficiente di correzione Correction factor

| CST | 10   | 15   | 20   | 32 | 40   | 50  | 60  | 80  | 100 | 200 |
|-----|------|------|------|----|------|-----|-----|-----|-----|-----|
| F   | 0.51 | 0.66 | 0.76 | 1  | 1.22 | 1.4 | 1.6 | 1.9 | 2.1 | 3.4 |

### Diagramma di rendimento Performance diagram



### Diagramma perdite di carico (32 cst) Pressure drop diagram (32 cst)

