

## OPERATION

This is a normally-closed, pilot-operated, poppet-type 12-size solenoid valve with free reverse flow. When de-energized, the valve acts as a check valve, allowing flow from port 1 to port 2, and blocking flow from port 2 to port 1. When energized, the valve's poppet is shifted and allows flow from port 2 to port 1, and from 2 to 1.

## APPLICATIONS

This valve is designed for low leakage applications and can be used in a circuit with a single acting cylinder to control motion, provide load holding or as a general purpose diverter or dump valve.

This solenoid valve is a technical replacement for CP501-3.



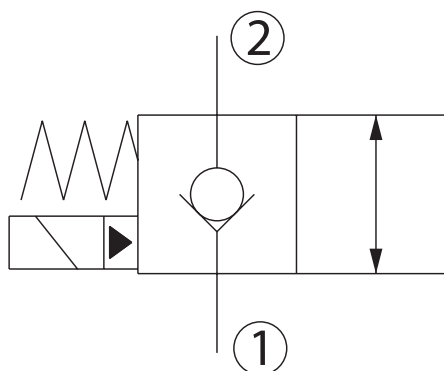
Shown with Standard H16 Coil,  
 Deutsch Connector

## SPECIFICATIONS

<b>Rated pressure*</b>	350 bar [5075 psi]*
<b>Rated flow at 7 bar [100 psi]</b>	114 l/min [30 US gal/min]
<b>Leakage</b>	6 drops/min @ Rated pressure
<b>Weight</b>	0.43 kg [0.95 lb]
<b>Cavity</b>	CP12-2
<b>Standard Coil</b>	H16 29 Watt

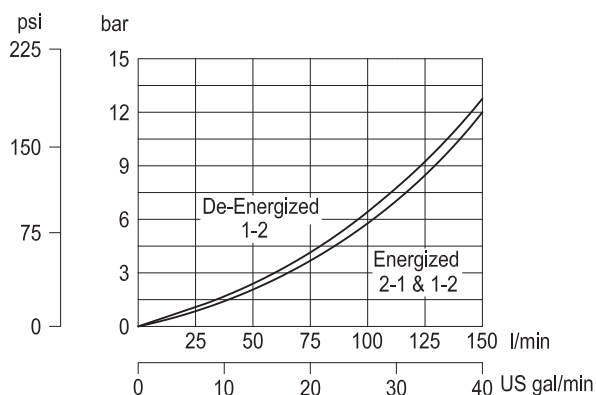
\* Rated Pressure based on NFPA fatigue test standards (at 1 Million Cycles).

## SCHEMATIC

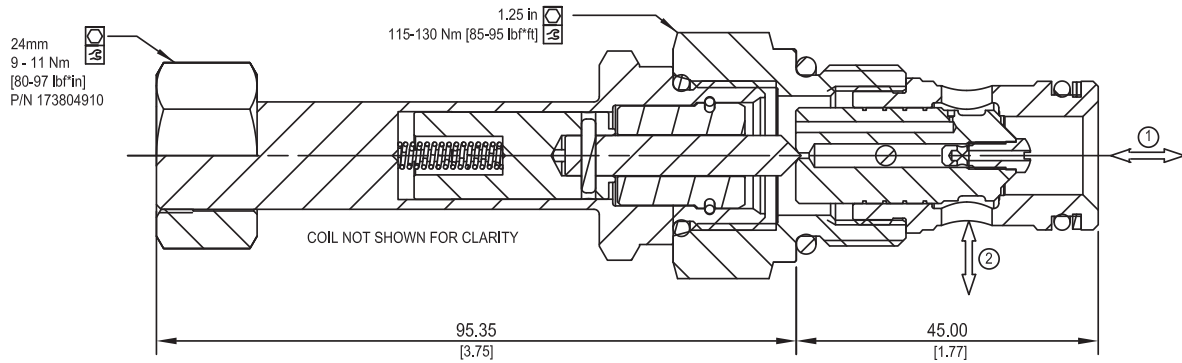


## PERFORMANCE CURVES

Pressure Drop  
 26 cSt [121 SUS] hyd.oil at 50C [122F]

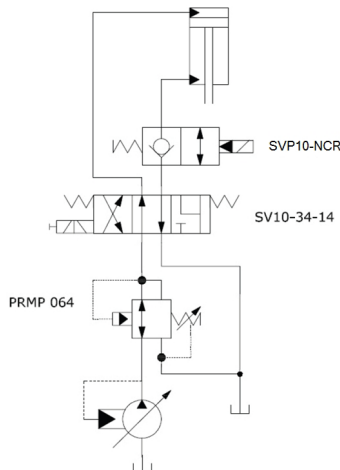


## DIMENSIONS

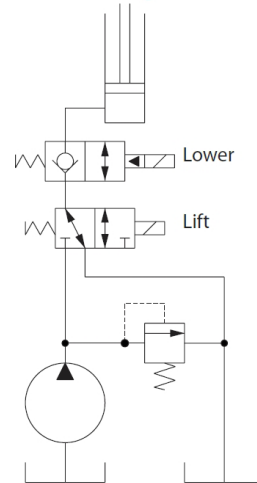


## EXAMPLE CIRCUITS

Height Control with Float Option



Lift, hold, & lower single acting cylinder



P103 102E

## ORDERING INFORMATION

**HSVP12 - NCR - H12D - DE - XC - B - 00**

High Pressure Solenoid Valve  
 Normally-Closed, Pilot Operated,  
 Free Reverse Flow, 12 Size,  
 Poppet Type

### Coil Voltage

Code	Description
H00	No Coil
H12D	12 VDC
H24D	24 VDC

### Coil Termination

Code	Description	IP Rating
00	No Coil	-
FL	Flying Lead	IP69K
DE	Deutsch	IP69K
AS	AMP Super Seal 1.5 & Metri Pack 150 type 1	IP69K
ASDB	AMP Super Seal with Diode Bidirectional	IP69K
DEDB	Deutsch with Diode Bidirectional	IP69K
FLDB	Flying Lead with Diode Bidirectional	IP69K

### Bodies

Code	Ports & Material	Body Nomenclature
00	Cartridge Only	No Body
10S	#10 SAE, AL	SDC12-2CP-10S
S10S	#10 SAE, DUCTILE	SDC12-2CP-S10S
12S	#12 SAE, AL	SDC12-2CP-12S
S12S	#12 SAE, DUCTILE	SDC12-2CP-S12S
4B	1/2 BSP, AL	SDC12-2CP-4B
S4B	1/2 BSP, DUCTILE	SDC12-2CP-S4B
6B	3/4 BSP, AL	SDC12-2CP-6B
S6B	3/4 BSP, DUCTILE	SDC12-2CP-S6B

\*\*Aluminum bodies are to be used for lower pressures less than 210 bar (3,000 psi)

### Seal Option

Code	Seal Material	Seal Kit
B	Buna	120017
V	Viton	120018

### Manual Overrides

Code	Description
XC	No Manual Override